

# MARTYNA EDER



|                    |                                  |
|--------------------|----------------------------------|
| Profession         | actress                          |
| Playing age        | 32 to 42 years                   |
| Nationality        | German                           |
| 1st residence      | Munich                           |
| Place of action    | Hamburg, Munich                  |
| Ethnic appearance  | White Central European/Caucasian |
| Hair colour        | brown                            |
| Hair length        | long                             |
| Eye colour         | brown                            |
| Stature            | slim                             |
| Height             | 174 cm                           |
| Weight             | 59 kg                            |
| Language(s)        | German - native speaker          |
| Dialects / accents | DE - Bavarian                    |
| Voice range        | alto                             |
| License            | B (car)                          |



## Contact:

Agentur Christel Vonk, Christel Vonk  
Tel +49.30 - 23 09 54 44



## Education

Jan 2006 - Jan 1998 München Film Akademie

## Film



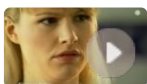
2010  
Uns trennt das Leben

supp. role, TV-Movie, arte, BR, SWR, R: Alexander Dierbach



2010  
Sturm der Liebe

supp. role, TV Series, ARD, Degeto



2010  
Eine wie keine

supp. role, TV Series, SAT.1

2009

Das Fenster

supp. role, Short Feature Film, R: Eva Severini



2008  
SOKO 5113

supp. role (ep.), TV Series, ZDF

## Theatre

|      |   |                           |
|------|---|---------------------------|
| 2008 | Heppel&Ettlich<br>6 Zimmer, Küche, Sarg | Lucy, R: Sebastian Gerold |
| 2007 | Wolff-Ferrari-Haus<br>Schweig, Bub!     | Gerda, R: Bernd Seidel    |