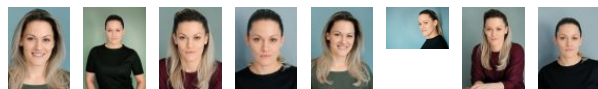


## SANDRA VON BONIN



### Contact:

the actors, Agents and assistants: Sonja, Petra, Sylvia, Thilo  
Tel +44.20 - 32 86 22 80

to the video

Profession	actress, singer, presenter
Nationality	German
(Federal) State	Bavaria
1st residence	Munich
Place of action	Augsburg, Berlin, Munich, Nuremberg
Ethnic appearance	White Central European/Caucasian, White Eastern European, Scandinavian
Hair colour	blond
Hair length	long
Eye colour	blue-green
Stature	slim
Height	156 cm
Confection size	36-38
Language(s)	German - native speaker English - fluently French - basics
Dialects / accents	DE - Bavarian (native dialect) AT - Viennese
Singing	rock/pop - concert level jazz - good classic - good
Voice range	mezzosoprano
Musical instrument	dulcimer - good ukelele - basics
Sports	arnis/eskrima/kali - basics ski - basics stage fencing - basics swimming - basics thai boxing - good
Dancing	standard - concert level latin-american - good rock'n'roll - good historic dances - basics jazz dance - basics modern dance - basics step - basics
License	A (motorcycle) B (car)
Special skills	Gesang (als Sangerin Sandy Lee bekannt)

### Education

2001 - 2003	Schauspielschule Ruth von Zerboni
1999 - 2001	Munchner Schauspielstudio

### Film

2018	Schatten uber dem Bodensee	lead, Indie Feature Film, R: Hans Gunther Grenouillet
2011	Das kalte Gericht	supp. role, medium length Film, R: Thomas Pill
2008	Um Himmels Willen	supp. role, TV Series, ARD, R: Ulrich Ulli Konig
2007	Um Himmels Willen	supp. role, TV Series, ARD, R: Ulrich Ulli Konig

2007	Marienhof	supp. role, TV Series, ARD
2006	Hausmeister Krause - Ordnung muss sein	bit part, TV Series, SAT.1, R: Geriet Schieske
2005	Alles außer Sex	supp. role, TV Series, ProSieben, R: Peter Gersina
2001	Herzschlag - Das Ärzteteam Nord	supp. role, TV Series, ZDF

### Theatre

2006	S Ensemble Theater Augsburg + Theater und so fort Wie bringt man den Präsidenten um?	Maria, R: Heiko Dietz
2002	Stadtheater Augsburg Drei Groschenoper	Fixen, R: Holger Schulze
2002	Stadtheater Augsburg Don Carlos	Marquisin Mondequar und Gräfin Fuentes, R: Holger Schulze

### Other projects

2015 - 2019	Radio Fantasy am Abend Moderation, Radio Fantasy	
-------------	---	--