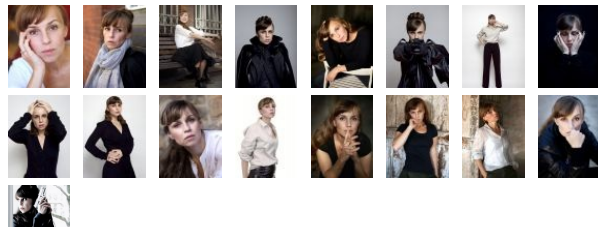


# VLATKA ALEC



|                    |   |
|--------------------|---|
| Profession         | actress, dubber   |
| Nationality        | Croatian  |
| (Federal) State    | Berlin  |
| 1st residence      | Berlin  |
| Place of action    | Cologne, Hamburg, Munich  |
| Ethnic appearance  | White Central European, East European   |
| Hair colour        | dark blond  |
| Hair length        | long  |
| Eye colour         | brown-green   |
| Stature            | slim  |
| Height             | 167 cm  |
| Confection size    | 36  |
| Language(s)        | German - native speaker<br>Croatian - native speaker<br>Bosnian - fluently<br>English - fluently<br>Serbian - fluently<br>French - basics<br>Spanish - basics |
| Dialects / accents | DE - Berlin<br>AT - Viennese  |
| Singing            | Chanson - concert level<br>Jazz - concert level   |
| Voice range        | mezzosoprano  |
| License            | B (car)   |
| Special skills     | slawische und romanische Dialekte und Klangvariationen  |

## Contact:

Luisa Held Management, Luisa Held  
Tel +49 30 61648296

Vlatka Alec

to the video

## Prizes & Awards

|      |   |
|------|---|
| 2014 | International Digital Emmy for "DINA FOXX - Tödlicher Kontakt"                          |
| 2008 | THE DISCREET CHARMS OF THE REFUGEE - Winner<br>Waterford Filmfestival Chicago           |
| 2005 | First Steps Award Nomination for NORDSTADT as „Best Feature Film“ Mediaaward Babelsberg |

## Film

|      |                     |   |
|------|---------------------|---|
| 2019 | Im Schrank          | lead, Short Feature Film, R: Martin Frimel          |
| 2017 | Sound Dogma - Dogma | lead, Music Video, R: Tuca Paoli                    |
| 2016 | SOKO Köln           | supp. role (ep.), TV Series, ZDF                    |
| 2014 | Tatort - Vielleicht | supp. role, TV-Movie (Series), RBB, R: Klaus Krämer |

|      |                                     |   |
|------|-------------------------------------|---|
| 2013 | Dina Foxx – Tödlicher Kontakt       | supp. role, TV-Movie, R: Max Zeitler                |
| 2011 | Shifting The Blame                  | supp. role, Feature Film, R: Lars-Gunnar Lotz       |
| 2011 | The Lottery Kings                   | supp. role (ep.), TV Series, WDR, R: Dominic Müller |
| 2011 | Lotte TV - So sollte Fernsehen sein | supp. role, TV Magazine, R: Joseph Bolz             |
| 2010 | Rosa Roth - Bin ich tot?            | supp. role, TV-Movie (Series), ZDF, R: Carlo Rola   |
| 2010 | Kommissar Stolberg                  | supp. role, TV Series, ZDF, R: Michael Schneider    |
| 2010 | Eine wie keine                      | supp. role, TV Series, SAT.1                        |
| 2009 | Lotte TV                            | supp. role, TV Magazine, R: Joseph Bolz             |
| 2004 | Nordstadt                           | supp. role, Indie Feature Film, R: Michael Kupczyk  |

## Theatre

|             |   |   |
|-------------|---|---|
| 2019        | Theater an der Museumsinsel<br>FAUST – SCHÖNHEIT, LIEBE, ARBEIT nach J.W. Goethe        | Hauptrolle Mephisto, R: Maurici Farré                             |
| 2018        | Monbijou Theater, Berlin<br>DIE RÄUBER Drama von Friedrich v. Schiller                  | Amme Nele, R: Maurici Farré                                       |
| 2018 - 2016 | Monbijou Theater, Berlin<br>DIE LUSTIGEN WEIBER VON WINDSOR Komödie von Shake           | Hauptrolle: Mistress Ford / Wirtin Quickly, R: Darijan Mihajlović |
| 2017        | Monbijou Theater, Berlin<br>MACBETH Drama von Wiliam Shakespeare                        | Lord Rosse / Hexe & Lady Macduff, R: Darijan Mihajlović           |
| 2016 - 2018 | Monbijou-Theater, Märchenhütte Berlin<br>GRIMMSCHE MÄRCHEN & Märchen aus aller Welt     | u. A.Kaiser Trojan, Schneewittchen, Ilse Fischerin, R: div.       |
| 2010        | DFFB Berlin<br>BUG Multimediale Theaterinszenierung, Autor: Trac                        | Hauptrolle: Agnes, R: Steffen Köhn                                |
| 2000 - 2003 | Deutsches Schauspielhaus Hamburg<br>Deutsches Schauspielhaus Hamburg                    | div., R: div.   |
| 1999        | Body Attacks Word-Company/Co-Produktion Montreal/B<br>Penthesilea Drama von H.v. Kleist | Penthesilea, R: Ann Lacey   |
| 1998        | The Opera House, Hong Kong<br>The Legend  | La Chansonette, R: Roy Szeto                                      |
| 1997 - 1998 | Düsseldorfer Schauspielhaus<br>Düsseldorfer Schauspielhaus                              | --, R: --   |